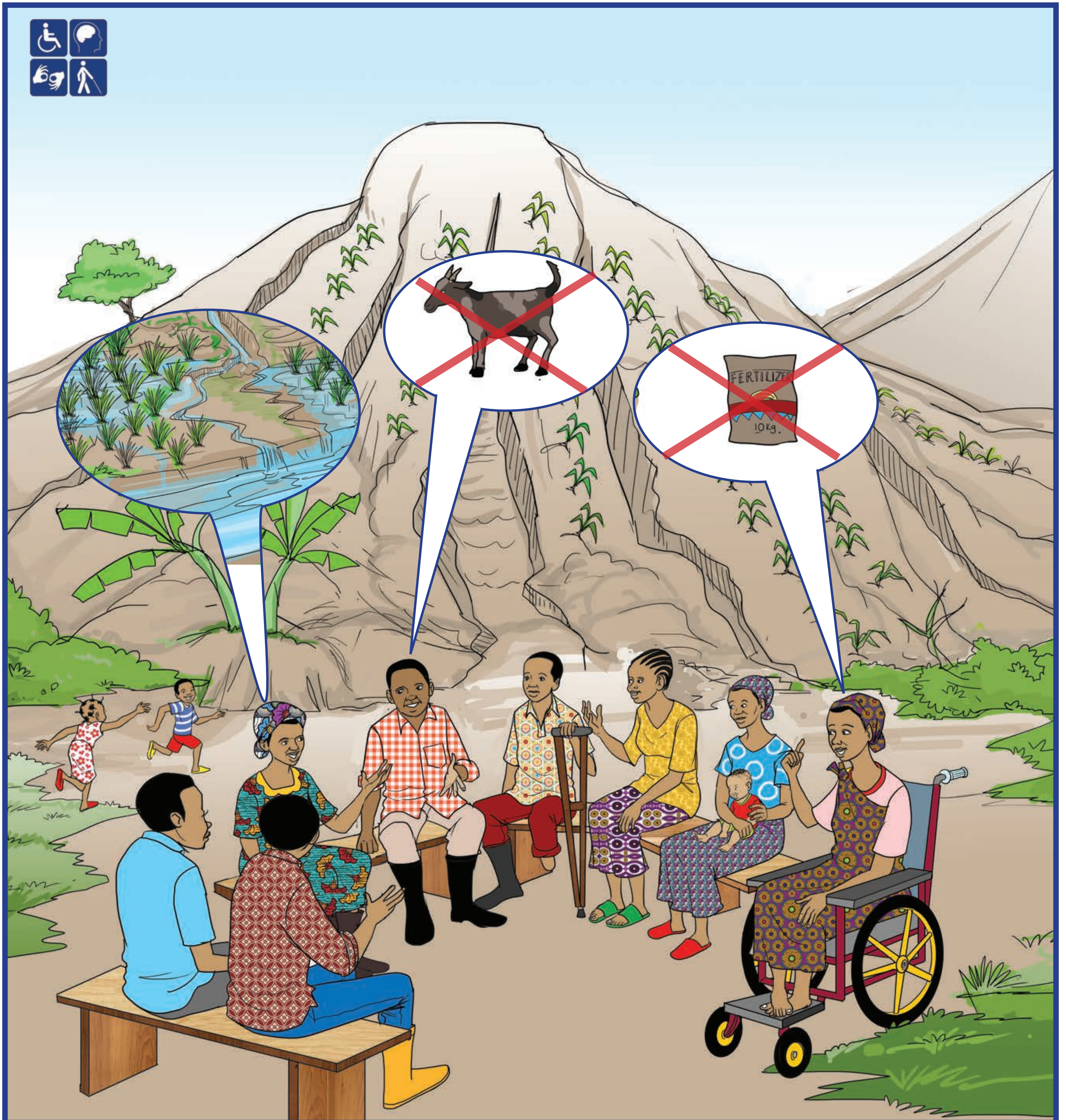


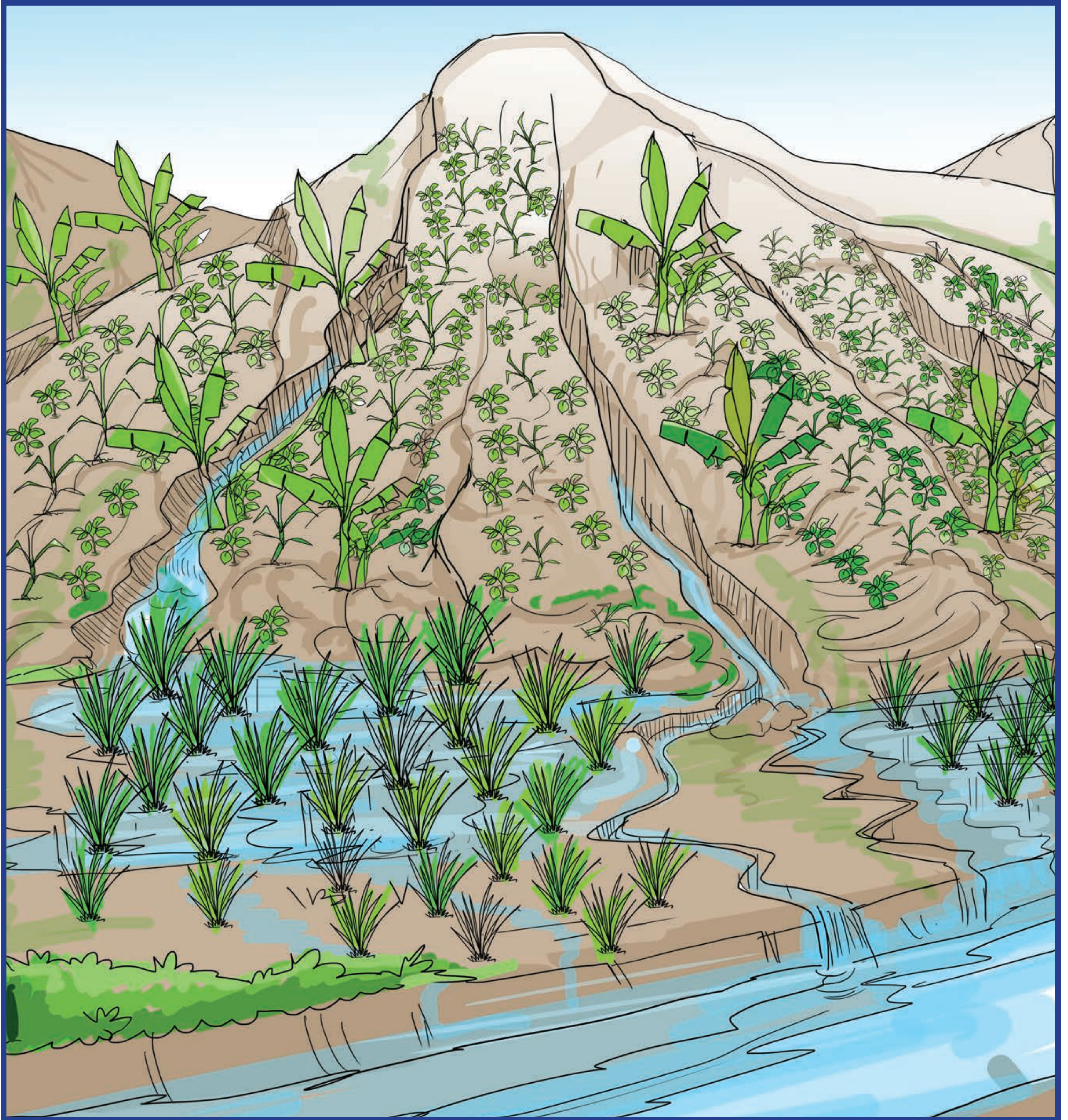
1.

Farmers discuss problems that hinder their development



2.

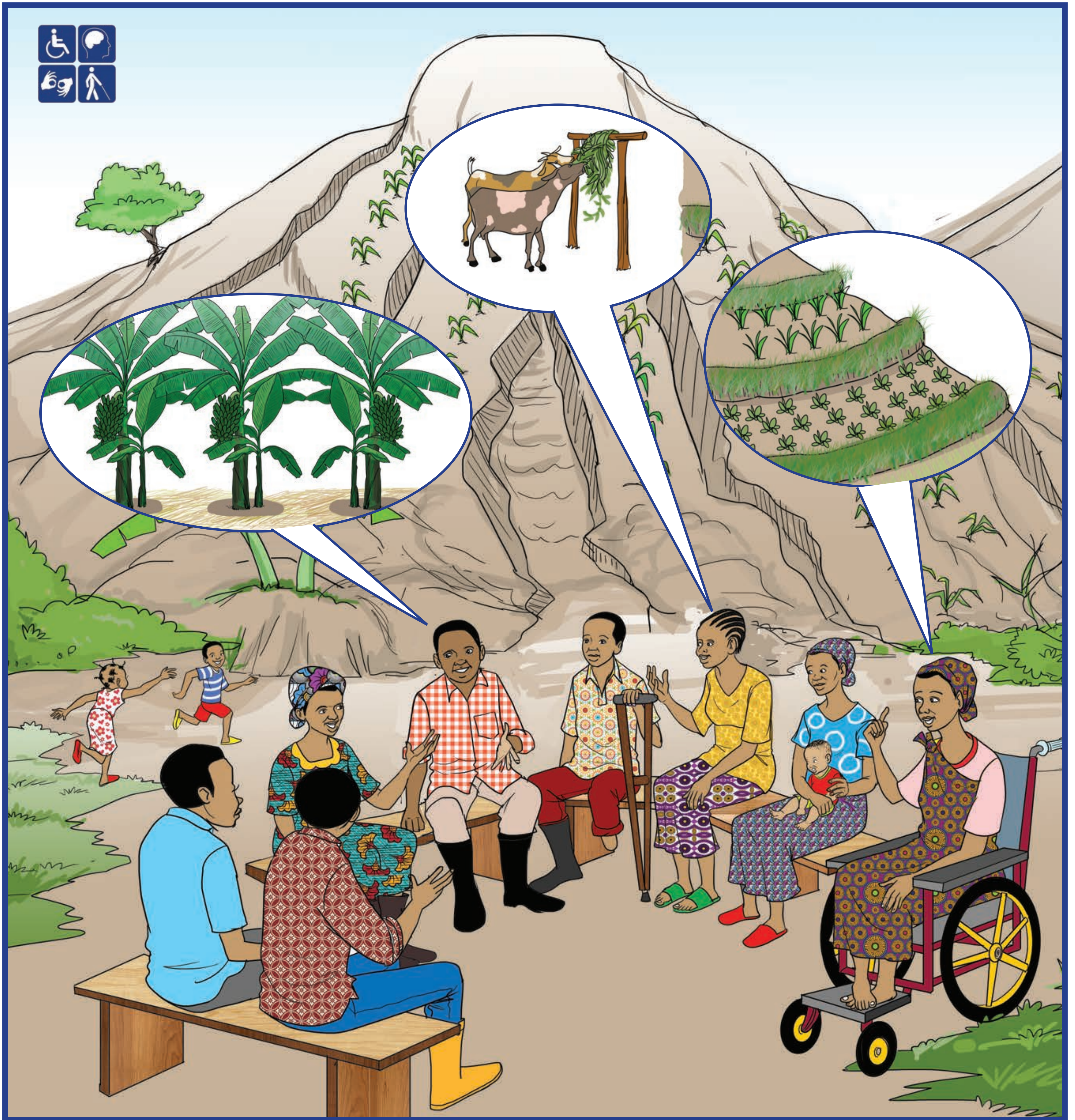
Problems upstream relate to problems downstream





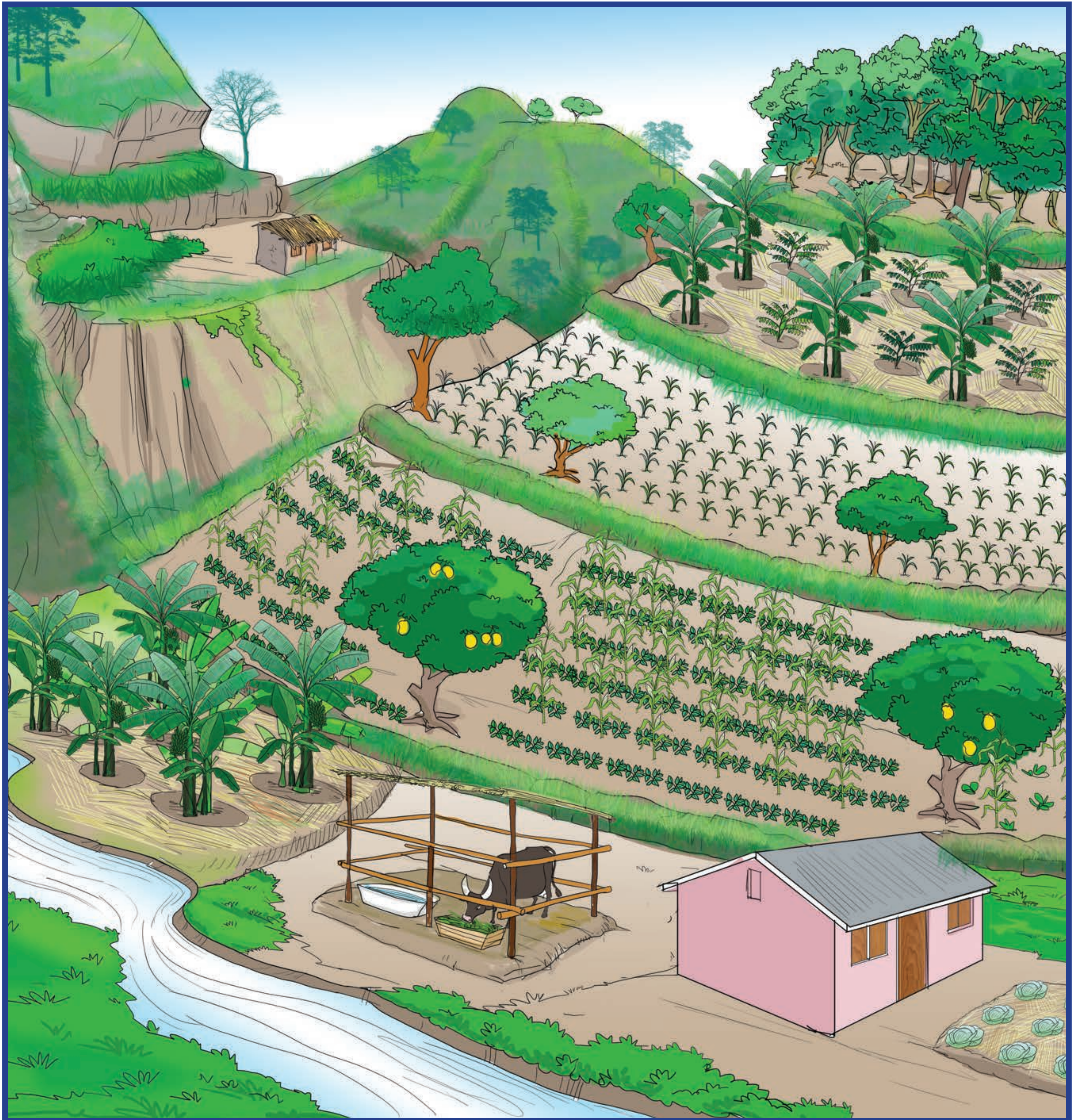
3.

Farmers propose potential solutions



4.

Solutions upstream downstream, along the whole slope



5.

Feedback from the households about problems and solution



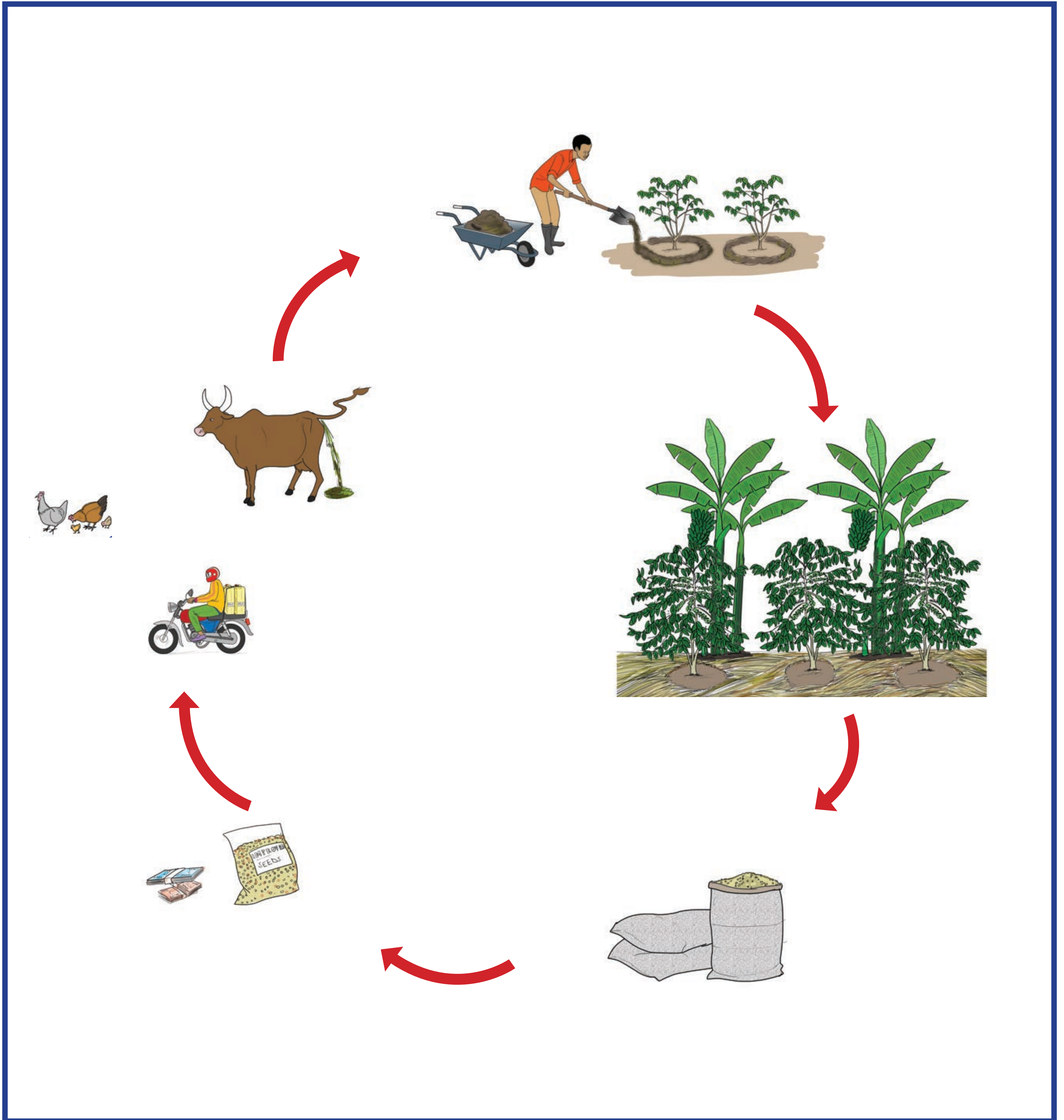
7.

PIP and the importance of diversification and integration on the farm



8.

Integrated farm management is essential for a resilient farm

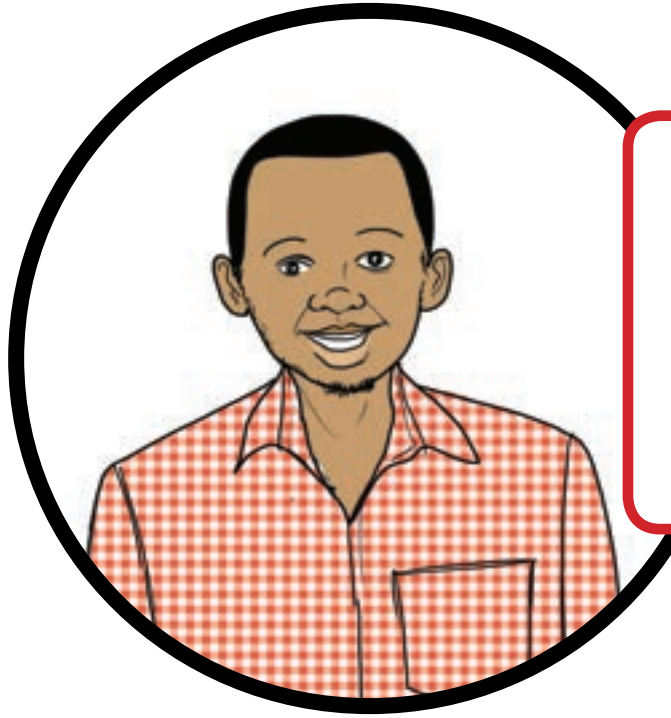


9.

Household members draw current status of their farm



10. Overview of the family members



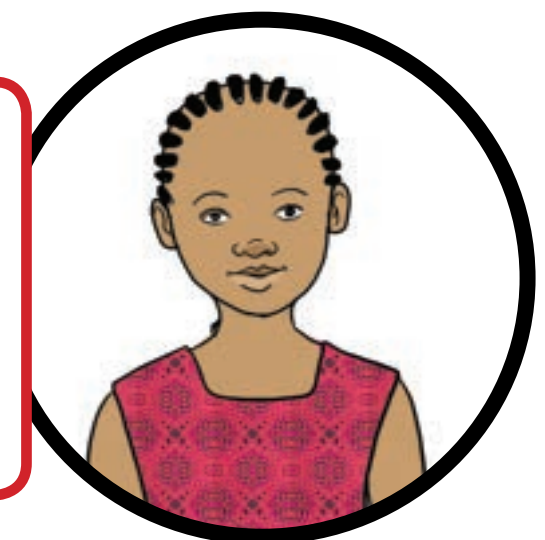
NAME:
AGE:
OCCUPATION:



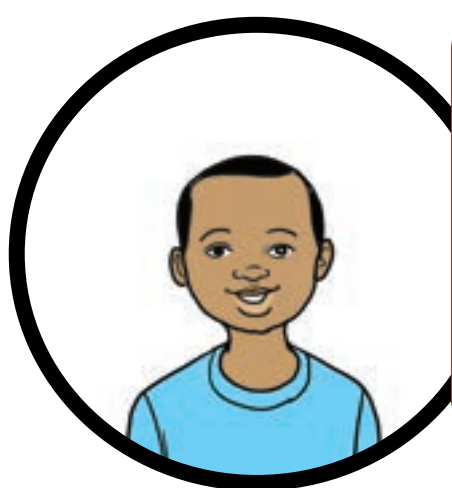
NAME:
AGE:
OCCUPATION:



NAME:
AGE:
OCCUPATION:



NAME:
AGE:
OCCUPATION:



NAME:
AGE:
OCCUPATION:



NAME:
AGE:
OCCUPATION:

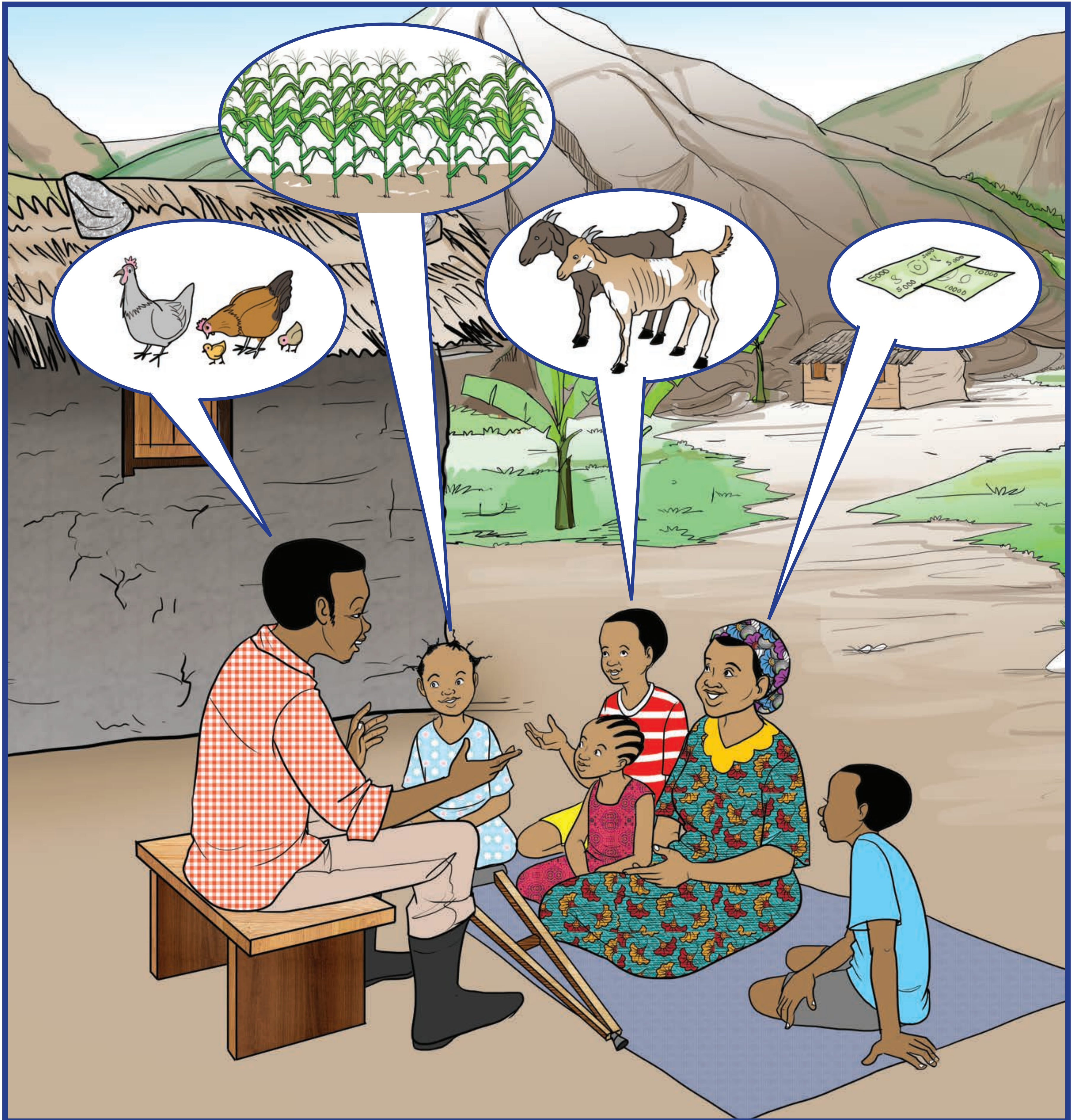
11.

Household members discuss aspirations and plans to achieve them



12.

Household members make an inventory of all their assets



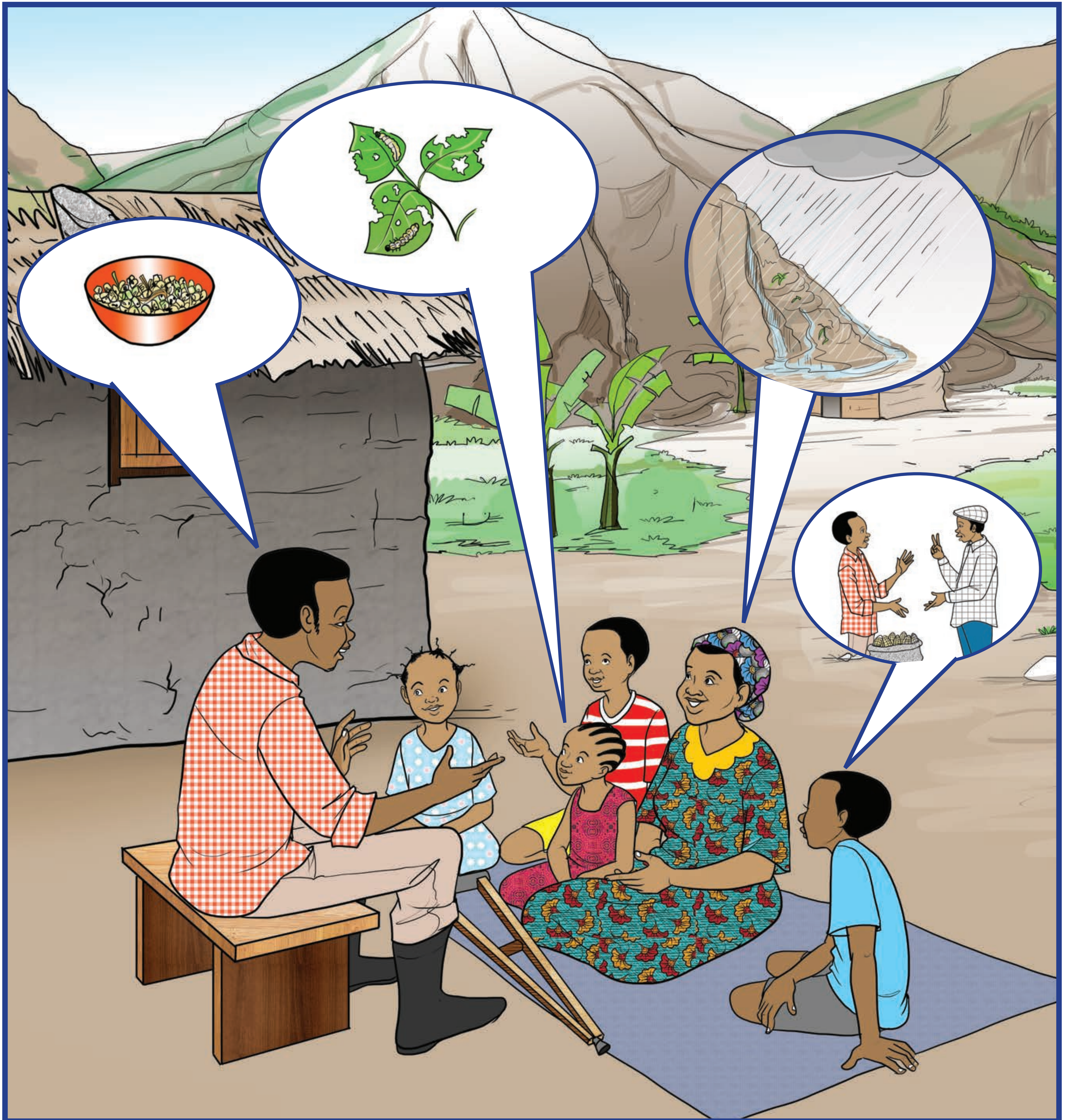
13.

Household members discuss strengths and weaknesses



14.

Household members discuss opportunities and threats



15.

Feedback from the households about strenghts, weaknesses, opportunities and threats



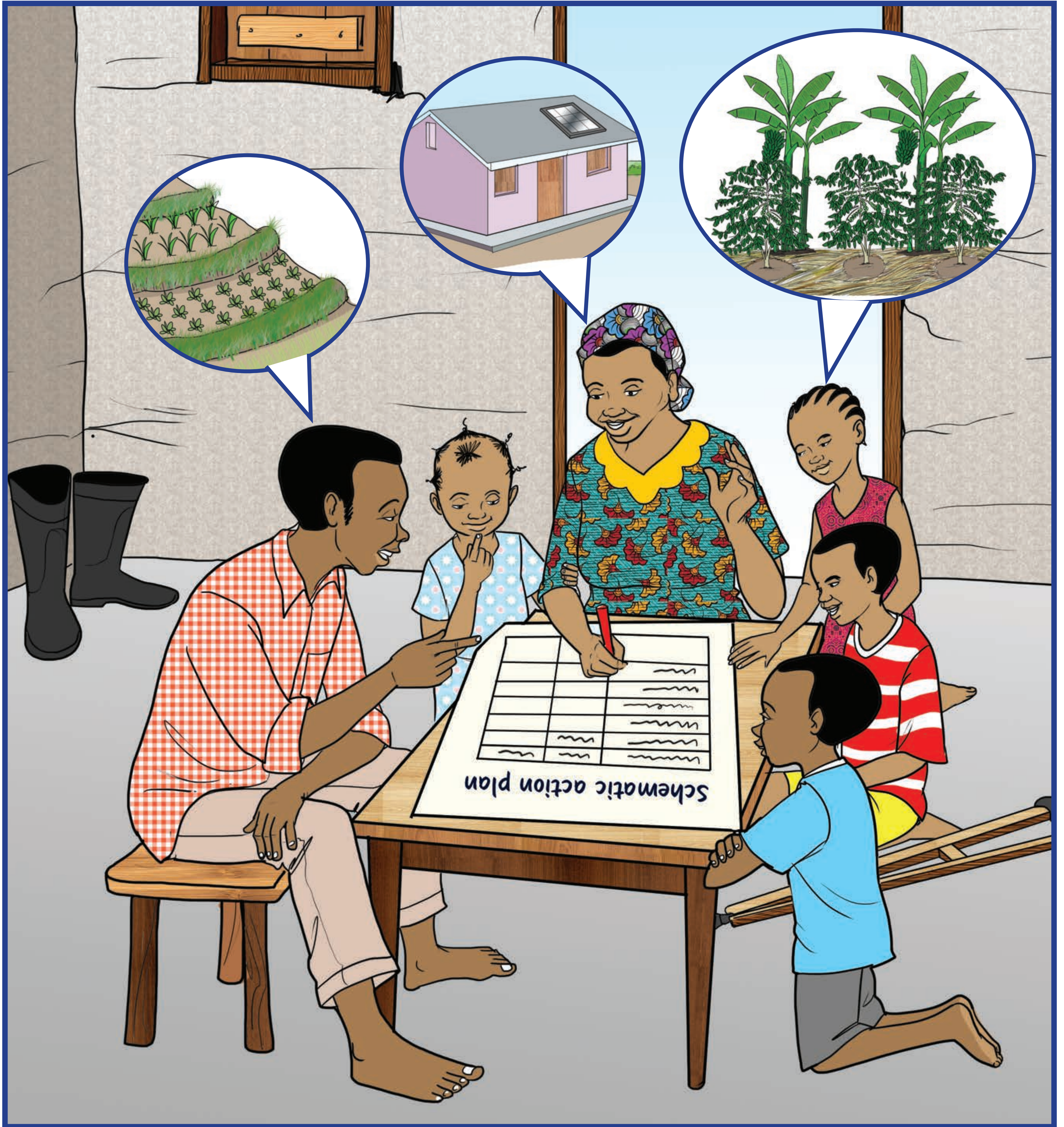
16.

Household members draw their vision for next 3 to 5 years



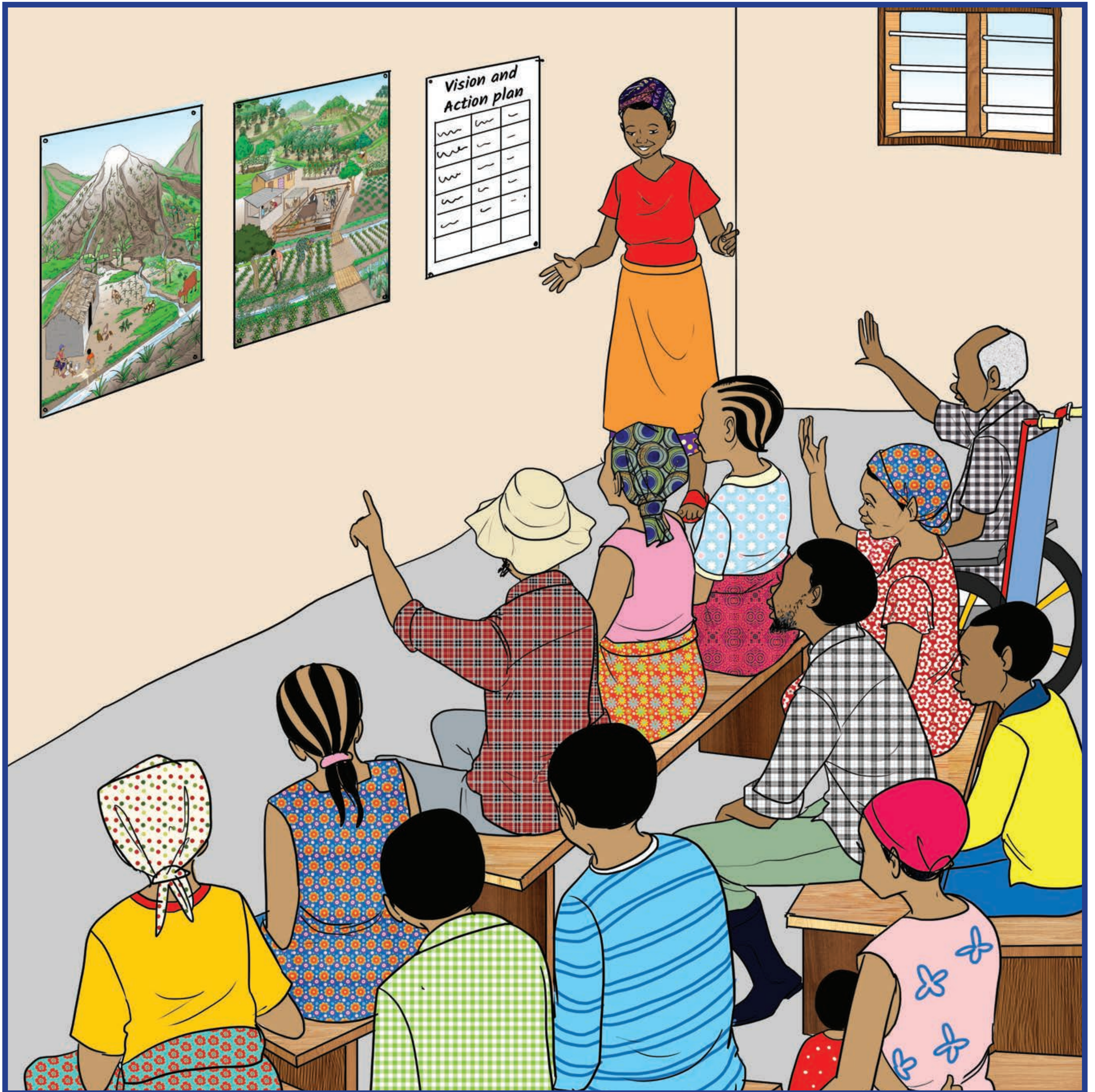
17.

Household members make their action plan



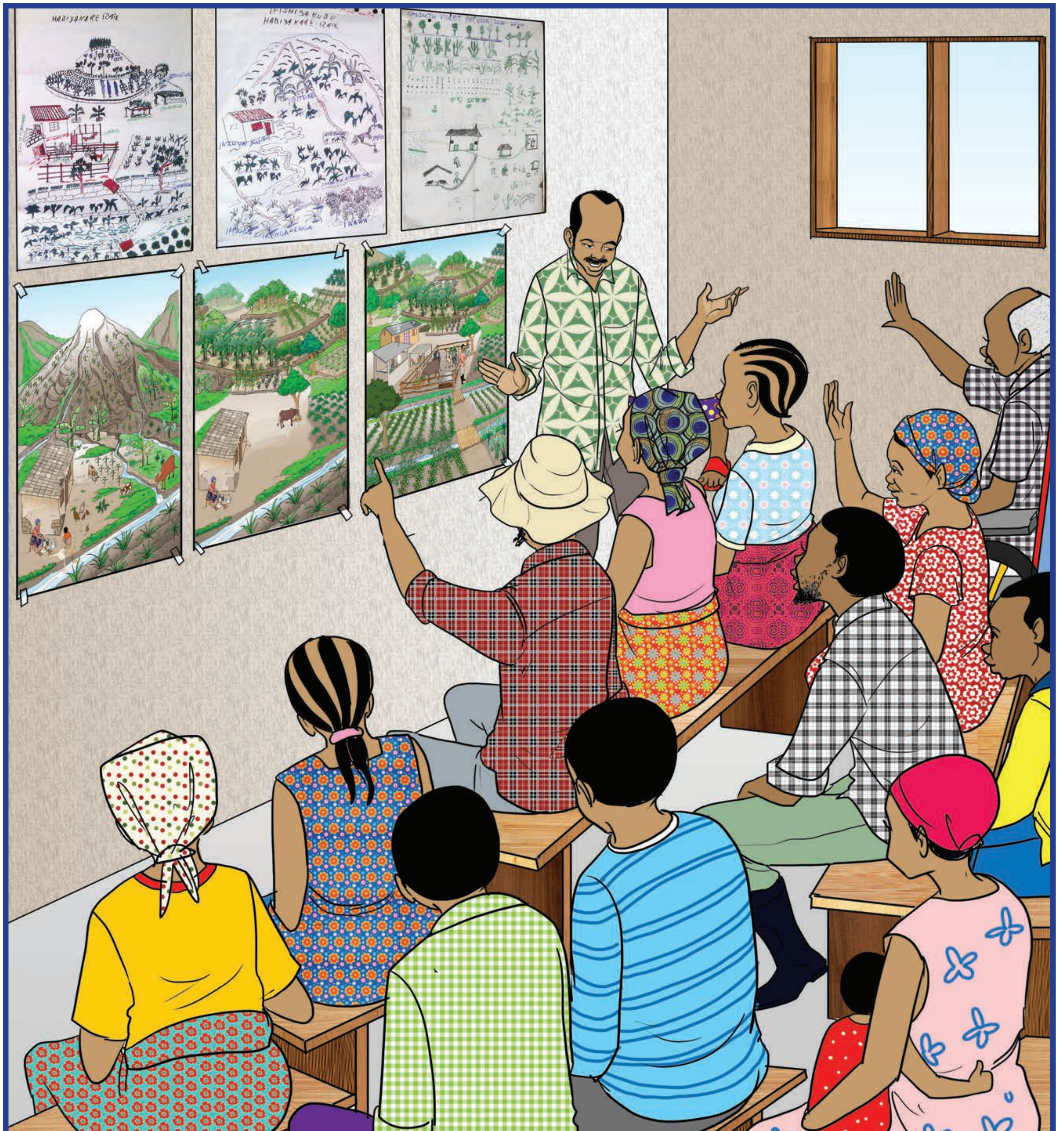
18.

Farmers vision and action plans evaluated in PIP groups for improvement



19.

Final PIPs are presented and discussed



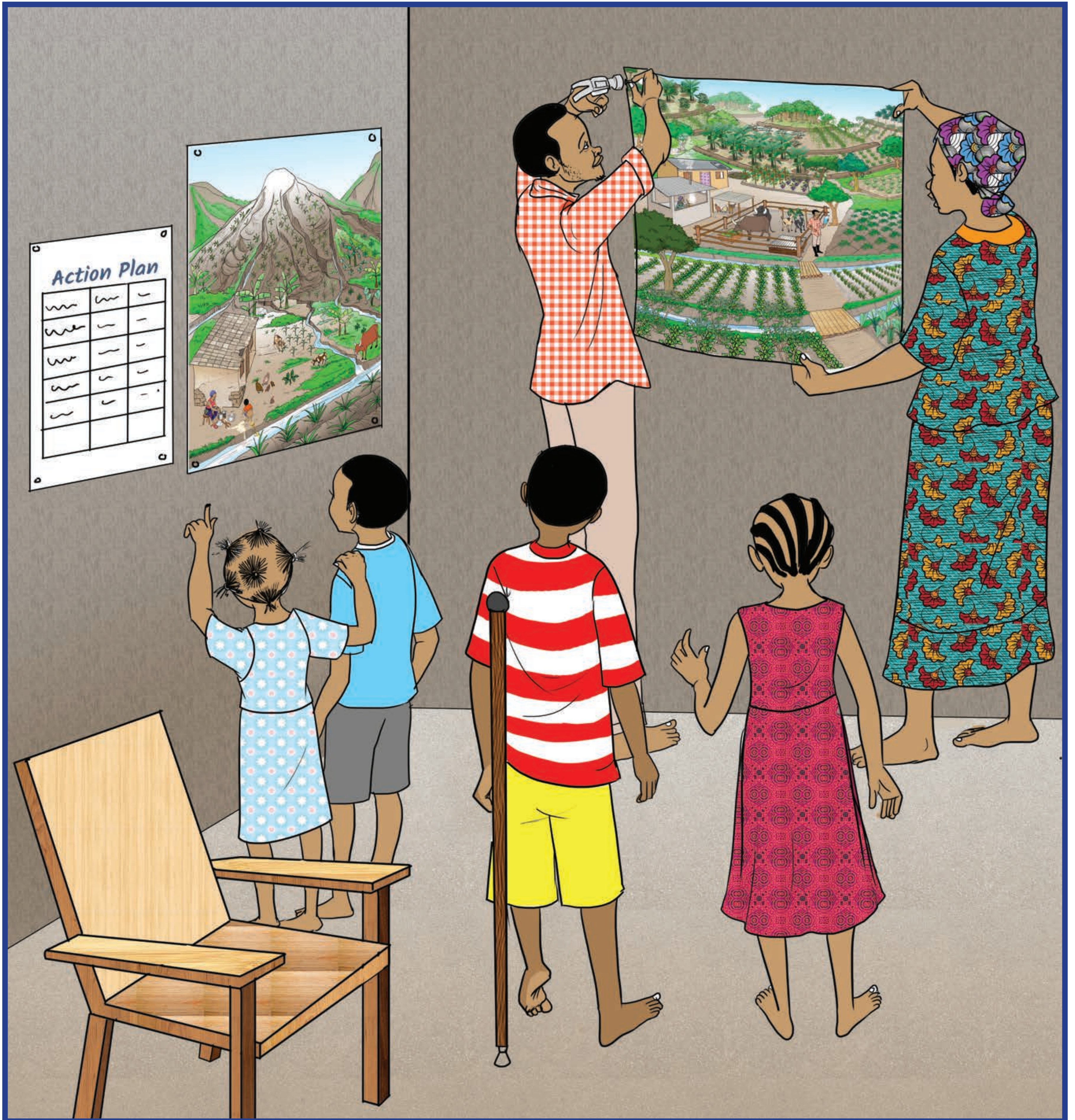
20.

Training needs for implementation of PIP actions are discussed



21.

Action 1: Hang the PIP for the farm on the wall in the house



22.

Action 2: Start implementing your PIP action plan!



23.

Our goal: we will all have more resilient farms and households

